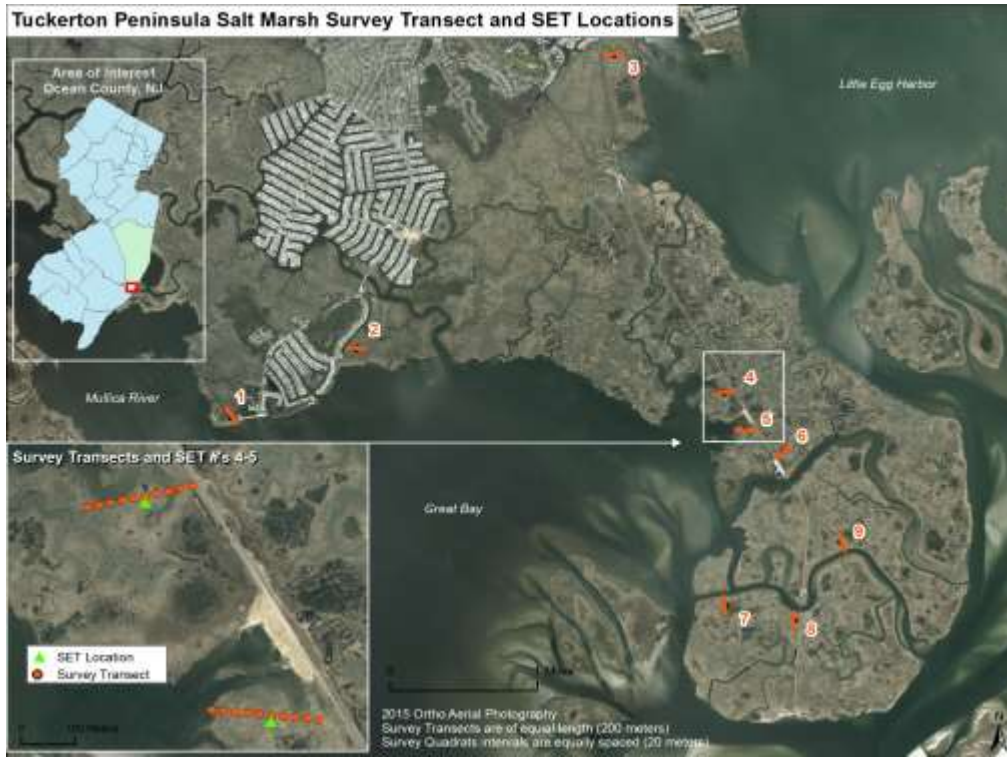


National Association of Marine Laboratories
Biennial Fall Meeting
Cousteau Center
130 Great Bay Boulevard
Tuckerton, New Jersey 08087

Draft Agenda



October 24, 2017

4:00 Welcome and introductions
Overview of Marine Field Programs
at Rutgers University

Mike De Luca

5:00 Tour of the Life on the Edge Exhibit

7:00 Dinner (at local restaurant)



October 25, 2017

8:30 Continental breakfast

9:00 Public Policy Update

Bob Cowen
Joel Widder
Meg Thompson

10:00 Fisheries research priorities at NOAA/NMFS

Cisco Werner

10:30 Science Presentations

Fisheries research

Tracking marine organisms

Ken Able
Tom Grothues

11:30 Break

11:45 Science presentations continued

Shellfish research and aquaculture

Coastal management user conflict

Resilience of coastal communities

Dave Bushek
Lisa Calvo
Lisa Auermuller

12:45 Lunch (provided)

Trail walk

1:30 Science presentations continued

Shoreline processes

Sentinel site initiative

Norb Psuty
Andrea Habeck

2:30 Break

2:45 NAML Business Meeting

Agenda development for 2018 Public Policy Meeting
Topics for Hill Briefing(s)
Financial report
Education report

5:00 Tour of the Marine Field Station



7:00 Dinner at the Marine Field station

October 26, 2017

8:30 Continental breakfast

9:00 Regional association meetings

NEAMGLL

SAML

WAML

11:30 Regional report outs

Noon Adjourn

Lunch (provided)